



# MIDSTATE CONNECTION

Office Hours: 7:00 am-5:30 pm, Monday-Thursday  
Closed Fridays & Holidays

Business Hours: 541-536-2126  
After Hours Outages: 800-752-5935

## Midstate Scholarship Offerings for 2024

We have scholarships available in the following categories:

- One-time **\$2,500 Continuing Education** scholarships
- Four-year **\$10,000 Graduating Senior** scholarships awarded in four allotments
  - Year 1 - \$1,500
  - Year 2 - \$2,000
  - Year 3 - \$2,500
  - Year 4 - \$4,000
- **\$25,000 Lineworker** scholarship
  - MEC will send the line school \$20,000, and recipient must put forward \$5,000. We will reimburse the \$5,000 once schooling is complete.

To apply, submit your application online. Additionally, paper applications are accepted in person at the Midstate office located at 16755 Finley Butte Rd in La Pine or via mail to Midstate Electric, P.O. Box 127, La Pine, Oregon 97739.

For more detailed information, please visit our website at [www.mse.coop/scholarship-programs](http://www.mse.coop/scholarship-programs) or contact us at 541-536-2126, option 5.

## APPLICATIONS DUE APRIL 9



## Prepaid Billing Puts You In Control

**NO DEPOSITS.**

**NO LATE FEES.**

**NO MONTHLY BILLS.**

By enrolling in Prepaid Billing (previously called PowerPay), you gain the flexibility to pay for your electricity at any time you choose. If you're on standard billing and have a deposit on your account, converting to Prepaid makes you eligible for a refund of that deposit, which will be credited towards your current energy costs. MEC members already utilizing Prepaid Billing express high satisfaction with the program, and data shows that participants in prepaid utility programs typically decrease their energy consumption due to heightened awareness of their usage patterns.

### **PAY AS LITTLE OR AS MUCH AS YOU WANT WHILE MAINTAINING A CREDIT BALANCE**

Think of Prepaid Billing like putting gas in your car. You pay for it before you use it. You can purchase a small amount every few days or "fill up" the tank and not worry about it for several weeks. This program bills and deducts from your balance daily.

### **MONITOR YOUR ELECTRIC USE**

Your usage and balance are calculated daily. Once Prepaid Billing is activated, you can monitor your usage at MyUsage.com. You can elect to be notified via phone, email and/or text messaging on low balances, daily balance, pending disconnect, and reconnection.

### **SIGN UP TODAY**

If you would like to sign up for Prepaid Billing or would like additional information about the program, visit <https://www.midstateelectric.coop/prepaid> or call 541-536-2126, option 3.



### **TAKE CONTROL AND SAVE ON YOUR UTILITY BILL**

MyUsage® provides you information about your utility consumption *anytime, anywhere*. It's fast, easy & convenient.

Download the FREE MyUsage App from the Apple App Store or Google Play Store.



## Save the Date: MEC's Annual Meeting is Saturday, May 18, 2024

We are gearing up for our 72nd Annual Meeting of the Members. If you have not attended the annual meeting in the past, this is your chance to learn about the financial and operating condition of your electric cooperative and to elect members to serve on the Board of Directors. At the meeting, board election results for Districts 1, 2, & 8 will be announced. Keep an eye out for your election ballot in the mail and make sure to cast your vote. These elected members play a crucial role in overseeing the Co-op's business and making important policy decisions for your member-owned electric utility.

The annual meeting offers a chance to connect with your community and the individuals behind your power supply. Enjoy a variety of activities including a resource fair, giveaways, safety demonstrations, raffle prizes, and a complimentary tri-tip and chicken barbecue. Please join us at the Midstate headquarters on May 18th from 9:00 a.m.-12:00 p.m. We hope to see you there!

Let's get connected on social media so you'll never miss an update on MEC activities, programs, and contests.



# Clearing the Path to Reliability

Trees are majestic, beautiful and good for the soul. But we also know that our members depend on us to deliver reliable power to their homes and businesses. That's why Midstate strives to balance maintaining the beautiful surroundings we all cherish with ensuring reliable electricity. You might not realize it, but there are several benefits to regular tree trimming.

## Reliability

Keeping power lines clear of overgrown vegetation improves service reliability. After all, we've seen the whims of Mother Nature during severe weather events with fallen tree limbs taking down power lines and utility poles. While many factors can impact power disruptions, about half of all outages can be attributed to overgrown vegetation. This is why you sometimes see Midstate crews or contractors out in the community trimming trees near power lines. Our trimming crews have been trained and certified based on the latest industry standards.

In fact, all U.S. electric utilities are required to trim trees that grow too close to power lines. Scheduled trimming throughout the year keeps lines clear from overgrown or dead limbs that are likely to fall, and we are better able to prepare for severe weather events.

Plus, we all know it's more cost-effective to undertake preventative maintenance than



Midstate uses drone technology to conduct power line inspections.

Photo (left) shows one of the drones used by contractor, Wiggins Tech.

it is to make repairs after the fact. Drone inspections of power lines and vegetation allow us to reduce labor and equipment costs while bolstering reliability. Through the use of small drones, we can accurately monitor the health and growth of trees and identify potential problems.

## Safety

Working near power lines can be dangerous, and we care about your safety and that of our lineworkers. For example, if trees are touching power lines in our members' yards, they can pose a grave danger to families. If children can reach those trees, they can potentially climb into a danger zone. Electricity can arc, or jump, from a power line to a nearby conductor such as a tree.

Any tree or branch that falls across a power line creates a potentially dangerous situation. A proactive approach lessens the chances of fallen trees during severe weather events that make it more complicated and dangerous for lineworkers to restore power.

## Affordability

As a co-op, Midstate always strives to keep costs down for our members. If trees and other vegetation are left unchecked, they can become overgrown and expensive to correct. A strategic vegetation management program helps keep costs down for everyone.

When it comes to vegetation management, there are ways you can help too. When planting new trees, make sure they're planted a safe distance from overhead power lines. Medium-height trees (40 ft. or smaller) should be planted at least 25 ft. from power lines. Taller trees (over 40 ft.) should be planted at least 50 ft. from power lines. You can also practice safe planting near pad-mounted transformers. Plant shrubs at least 10 ft. from the transformer door and 4 ft. from the sides. If your neighborhood has underground lines, remember to contact 811 before you begin any project that requires digging.

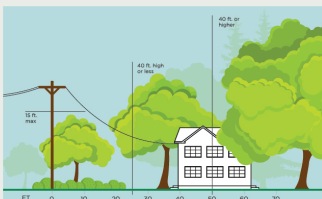
Additionally, if you spot an overgrown tree or branch that's dangerously close to overhead lines, please let us know by contacting 541-536-2126.

We have deep roots in our community, and we love our beautiful surroundings. It takes a balanced approach, and our vegetation management program is a crucial tool in ensuring service reliability.

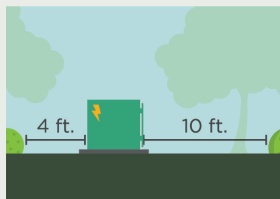
## 3 Ways to Help Limit Tree Trimming

Did you know electric utilities are required to trim trees and other types of vegetation that grow too close to overhead power lines? We know you love your trees, and we will do everything we can to avoid trimming them. Here's how you can help:

**1. Plant trees in the right place.** Trees that will be <40 ft. should be planted at least 25 ft. away from power lines (>40ft. should be at least 50 ft. away).



**2. Don't block pad-mounted transformers.** Plant shrubs at least 10 ft. away from transformer doors and 4 ft. from transformer sides.



**3. Report dangerous branches.** If you spot a tree or branch that is dangerously close to power lines, please let us know.



**Trimming improves safety for all.  
Let's work together to enjoy the beauty of trees and reliable electricity.**